



Parks  
Canada

Parcs  
Canada

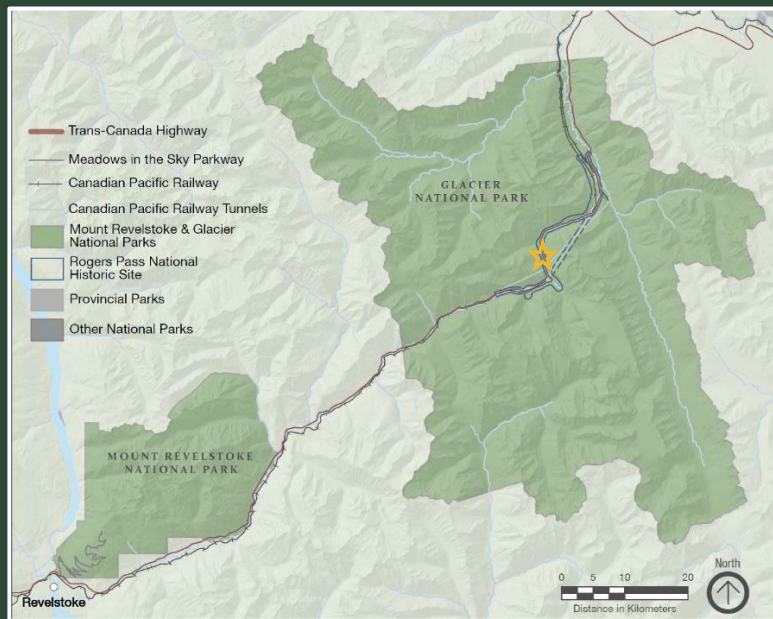
Canada

# Winter in Glacier National Park

November 2023



# Glacier National Park & Rogers Pass National Historic Site



Distance to Rogers Pass:  
Revelstoke: 68 km  
Golden: 81 km







# National Significance

Glacier National Park  
1886

Rogers Pass National  
Historic Site 1971





# Mandate & Responsibilities

- Protecting & Presenting
- Highway Operation



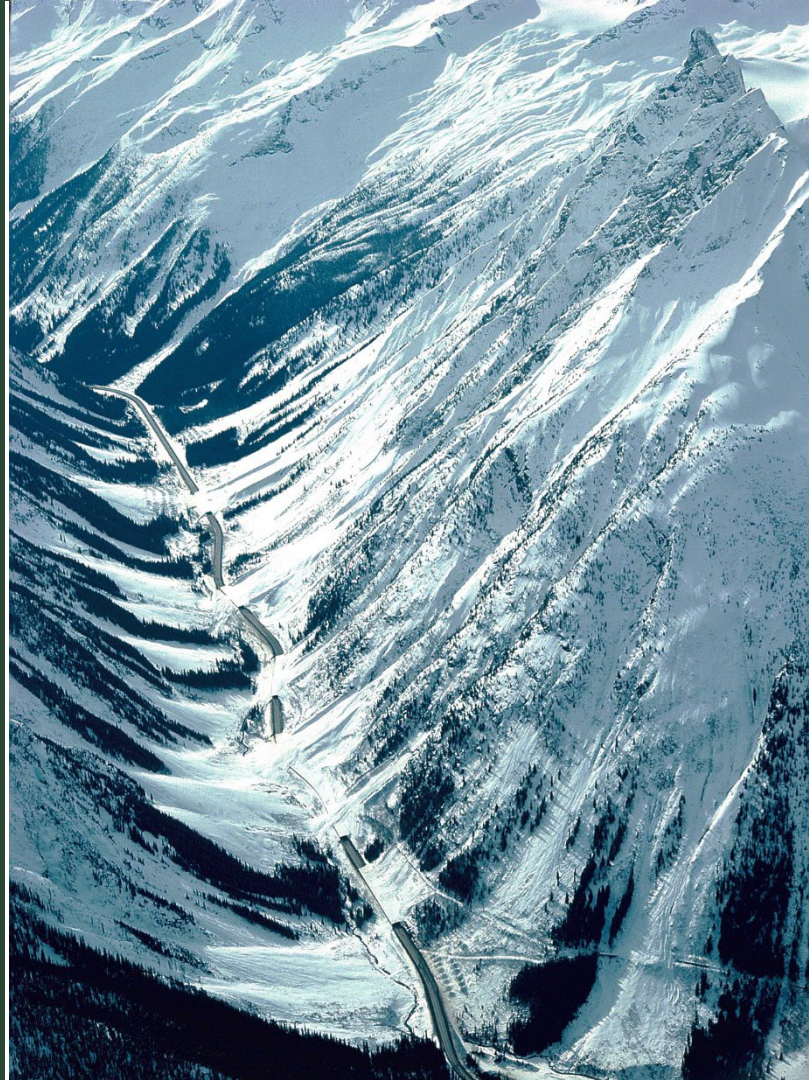




# Crossing the Columbias

A unique area

- Heavy snow – 14 metres annually
- 135 avalanche paths
- Live explosive avalanche control
- No detour





# Avalanche Control Section (ACS)

## Snow science

- Weather analysis
- Monitoring of snowfall
- Snowpack depth, layers & stability

## Avalanche Control

- Active & static defences







# Avalanche Controls

## Active defence

- Heli-bombing
- Remote avalanche control systems
- Live explosives using howitzers

## Static defence

- Snow nets
- Snowsheds, mounds, berms and dams

Cougar Corner Snow Nets  
Glacier National Park

Mitigated avalanche paths in red





# Avalanche Control

The Canadian Armed Forces

- Operation PALACI
- 24h / 7days

105mm C-3 Howitzers

- 16 gun positions
- Over 300 targets







# Highway Closures

It cost the Canadian economy \$68,000 for the first hour the Trans-Canada Highway is closed. This amount increases for each additional hour.





# Visitor Experience

## Backcountry Skiing

- The Winter Permit System
- Avalanche bulletin

Since 1961, all slopes along the national transportation corridor through Rogers Pass are closed in winter due to the use of live explosives for avalanche control.







# The Winter Permit System

Allows Parks Canada to open some areas along the national transportation corridor for winter recreation when no avalanche control is planned or anticipated.



[parks.canada.ca/skirogers](https://parks.canada.ca/skirogers)



# Awareness & Education

Big mountains, Big consequences

- Plan ahead!
- Be prepared!

The Winter Permit System

- Requires 100% compliance







# Questions?

Guylaine St-Gelais

Mount Revelstoke & Glacier national parks

[guylaine.st-gelais@pc.gc.ca](mailto:guylaine.st-gelais@pc.gc.ca)

